



GMT MONTHLY MEMBERSHIP PROGRESS REPORT

Results as of: 1/31/2017

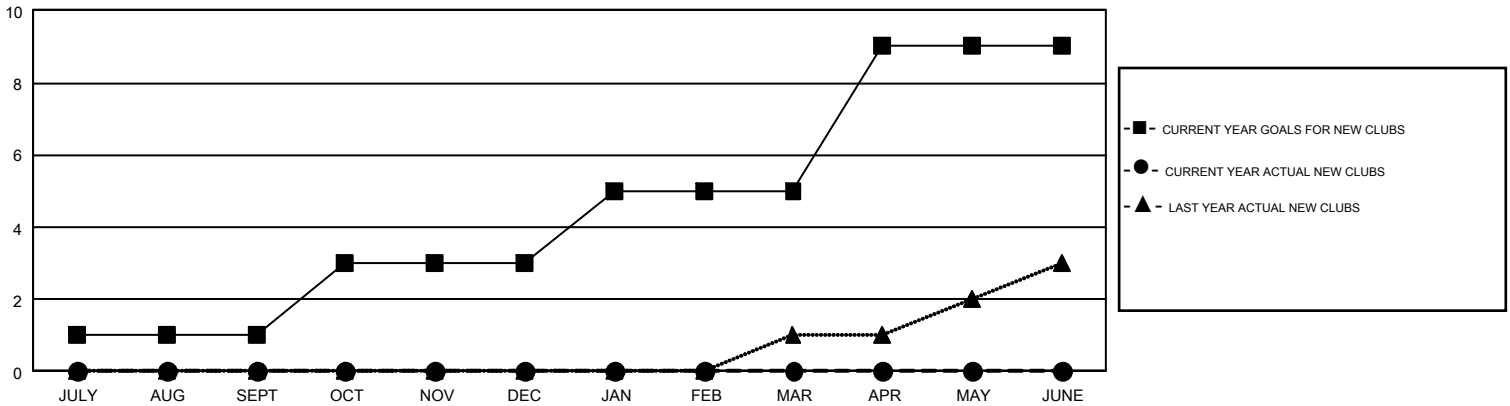
GMT Constitutional Area 7, Group B

GMT: HUCK TAINGAHUE

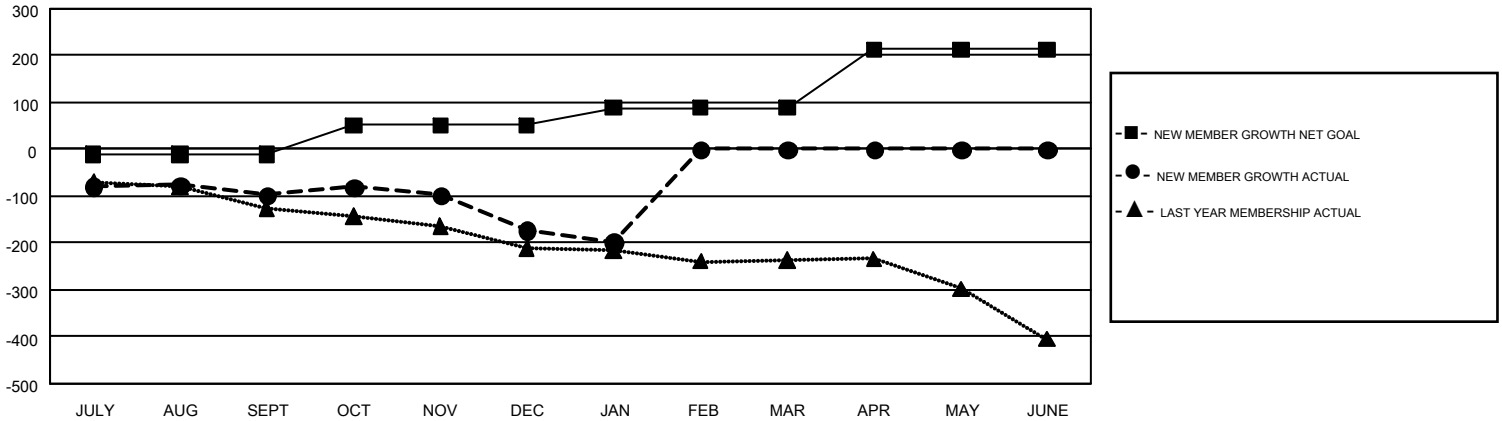
REPORT DOES NOT INCLUDE CLUBS IN UNDISTRICTED AREAS.

Clubs				Members			
RESULTS FOR 2016-2017				RESULTS FOR 2016-2017			
QUARTER	NEW CLUB GOAL	NEW CLUBS	DROPPED CLUBS	QUARTER	NEW MEMBER GROWTH NET GOAL (not reinstated or transfers)	NEW MEMBER GROWTH ACTUAL (not reinstated or transfers)	DROPPED MEMBERS ACTUAL (including transfers)
JULY/AUG/SEPT	1	0	3	JULY/AUG/SEPT	-11	192	290
OCT/NOV/DEC	2	0	2	OCT/NOV/DEC	62	180	254
JAN/FEB/MAR	2	0	2	JAN/FEB/MAR	37	24	51
APR/MAY/JUNE	4	0	0	APR/MAY/JUNE	125	0	0

GOALS AND ACTUAL NEW CLUBS CUMULATIVE



GOALS AND ACTUAL MEMBERS CUMULATIVE



DROPPED CLUBS: 7	191 CLUBS OF 373 ADDED 1 OR MORE NEW MEMBERS	GENDER DISTRIBUTION MALE 6,969 (69.92%) FEMALE 2,998 (30.08%)
DROPPED MEMBERS DECEASED 87 CLUB CANCELLED 18 OTHER 487 <hr/> TOTAL 592	CLICK HERE FOR CUMULATIVE MEMBERSHIP DATA	TOTAL FAMILY UNIT MEMBERS 852 FAMILY MEMBERS PAYING HALF DUES 432